



EBB & FLOW

Danish Decorative Lighting
2020



Patterns of heaven and earth

Launching our new line of fabric shades we introduce natural materials as a home luxury.

In the series you find patterns of heaven and earth, blooms and birds, leaves and palms. Each bringing a harmonious feeling to the home and making light an experience.

The lamp shades are available in four sizes and can be used as pendants, wall lamps or with a table lamp base.

EBB & FLOW



Previous page: Left: Fabric shade Ø35cm 30cmH tango palm green SH101088-C with an olive Pillar table lamp base. Center: Fabric shade Ø11,5cm 22cmH glyptic blush SH101066-B. Right: Top: Fabric shade Ø17,5cm 12cmH tremolo aubergine/chartreuse SH101085-A. Bottom: Fabric shade Ø35cm 30cmH lustica raffia SH101098-C with a golden smoke Lute table lamp base BA101005. This page: Fabric shade Ø30cm 40cmH salinas azelea/lagoon SH101094-D with a smokey grey Pillar table lamp base BA101041

Midnight jungle

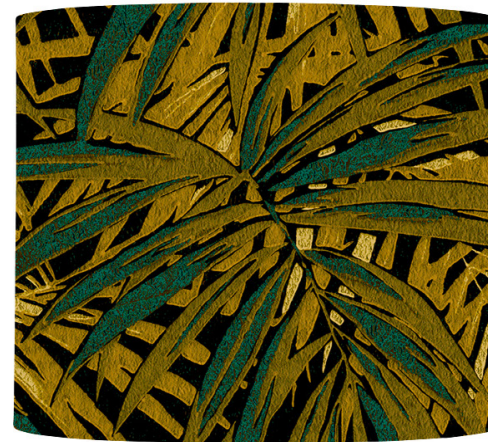


"Step into a deep jungle of earthy and wild fabrics.

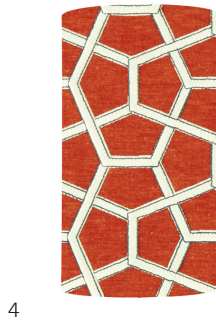
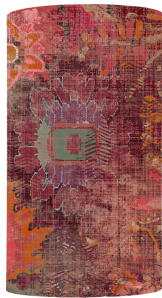
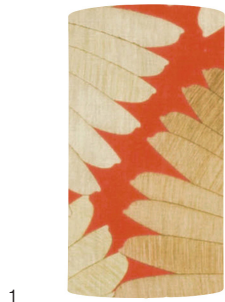
Browns and blacks with olive and lime coming through.

This is a stunning look".

1. Fabric shade Ø17,5cm 12cmH glyptic chartreuse SH101069-A
2. Fabric shade Ø30cm 40cmH lustica raffia SH101098-D
3. Fabric shade Ø35cm 30cmH leaves maize SH101112-C with a smokey grey Futura lamp base BA101026
4. Fabric shade Ø11,5cm 22cmH tango midnight SH101091-B



Shades of rust



"Say hello to a fiery style with a feel of red clay, warm sun-kissed shades of rust, with hints of sand".

1. Fabric shade Ø11,5cm 22cmH tango lacquer SH101090-B
2. Fabric shade Ø11,5cm 22cmH persia cinnamon SH101106-B
3. Fabric shade Ø11,5cm 22cmH persia terracotta SH101106-B,
4. Fabric shade Ø11,5cm 22cmH cubica cayenne SH101118-B,
5. Fabric shade Ø30cm 40cmH salinas russet/oyster SH101092-D

Dusty rose and vibrant pinks



1



2



3

"Welcome splashes
of pink and lilac that
dominate this dreamy
look, made soft with
accents of green and
white".



4

1. Fabric shade Ø17,5cm 12cmH cosmos blush SH101102-A
2. Fabric shade Ø17,5cm 12cmH tremolo tulip/coral SH101084-A
3. Fabric shade Ø17,5cm 12cmH glyptic cherry SH101065-A
4. Fabric shade Ø35cm 30cmH persia magenta SH101107-C





1

G r e e n s

2



3



4



”Sense the season and make room for spring vibes coming through, with greens mingling with white and sand in a pure and optimistic look”.



Previous page: Fabric shade Ø11,5cm 22cmH persia magenta SH101107-B,
Fabric shade Ø17,5cm 12cmH persia magenta SH101107-A
1. Fabric shade Ø30cm 40cmH tango palm green SH101088-D
with a forest green / gold Lute table lamp base BA101004
2. Fabric shade Ø17,5cm 12cmH fern leaves green SH101016-A
3. Fabric shade Ø17,5cm 12cmH branches green SH101021-A
4. Fabric shade Ø11,5cm 22cmH glyptic chartreuse SH101069-B

Indigo & grey



1



2

"The cool look, ranging from geometric, metallic, silvery shades, via grey to midnight navy..".

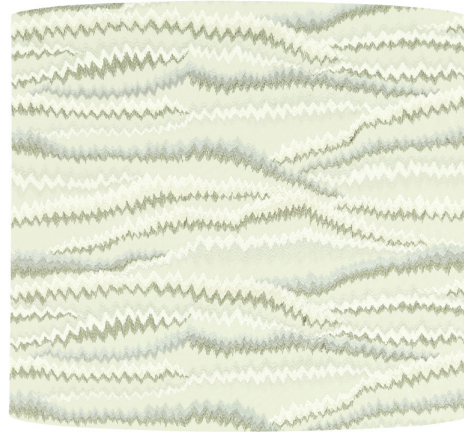
1. Fabric shade Ø35cm 30cmH palms indigo SH101109-C
2. Fabric shade Ø11,5cm 22cmH leaves electric SH101114-B
3. Fabric shade Ø11,5cm 22cmH cosmos indigo SH101104-B



3



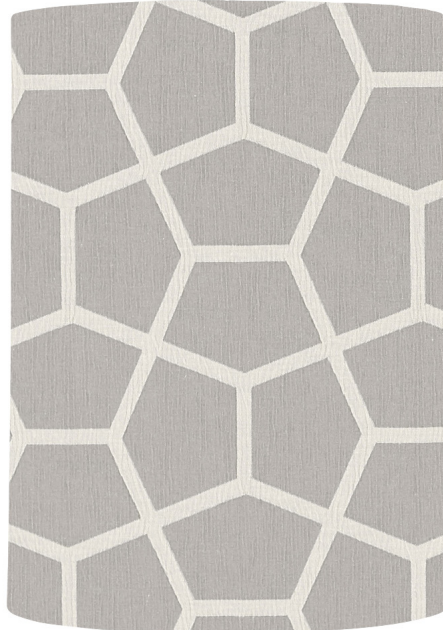
1



2



3



4



..The breezy style is calm and intriguing”.

- 1. Fabric shade Ø35cm 30cmH big weave sea mist SH101116-C
 - 2. Fabric shade Ø35cm 30cmH tremolo oyster/titanium SH101086-C
 - 3. Fabric shade Ø30cm 40cmH cosmos lago SH101103-D
 - 4. Fabric shade Ø30cm 40cmH glyptic titanium SH101067-D
- Next page: Left: Fabric shade Ø17,5cm 12cmH leaves lago SH101113-A, Fabric shade Ø11,5cm 22cmH palms onyx SH101111-B. Right: Fabric shade Ø30cm 40cmH cosmos indigo with a platinum stripes/ clear Pillar table lamp base BA101034

